

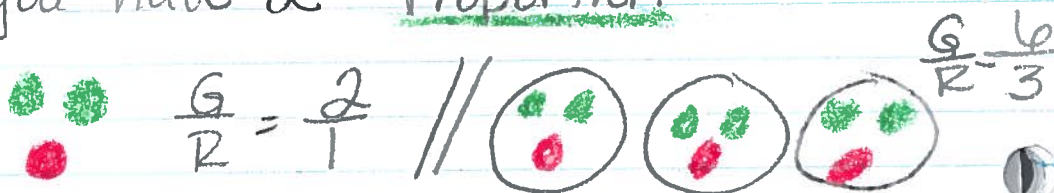
What are proportions

Ratio is a way of comparing two things



Three different ways

When you have two equivalent Ratios - you have a Proportion



Prove that they are equivalent = use cross products

$$\frac{2}{1} = \frac{6}{3}$$

IF cross products equal, they are proportionate!



Prove it = $\frac{2}{1} = \frac{5}{3}$

* IF cross products do not equal, they are not proportions!