

Area + Perimeter

Perimeter = The measure around the outside of an object

outside fence, boarder

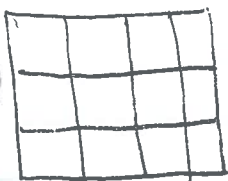


← add up all sides!

units are basic = cm, m, inches

Area = the number of squares (flat) that can be placed inside the shape.

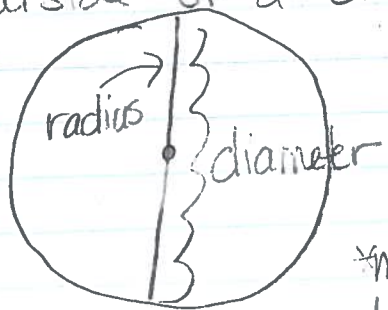
tiles on a floor, paint



units are squared! because they have length + width and make a square!

units → cm^2 , m^2 , mi^2

Circles Circumference → goes around the outside of a circle



Circumference =

$$C = 2\pi r \text{ or } \pi d$$

$$C = 2(3.14)(\text{diameter})$$

*make sure you plug in the correct values!

$$\text{Area} = \pi r^2 = (3.14)(r)(r)$$



units are squared