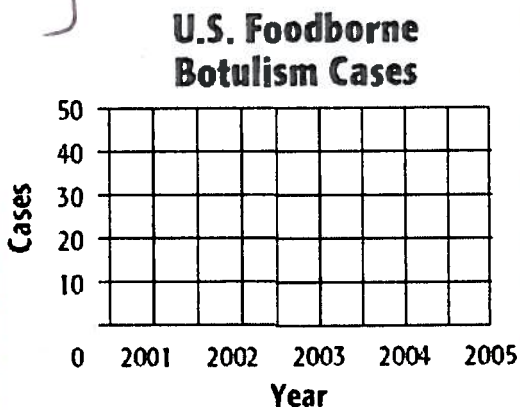


| U.S. Foodborne Botulism Cases | | | | | |
|-------------------------------|------|------|------|------|------|
| Year | 2001 | 2002 | 2003 | 2004 | 2005 |
| Cases | 39 | 28 | 20 | 16 | 18 |

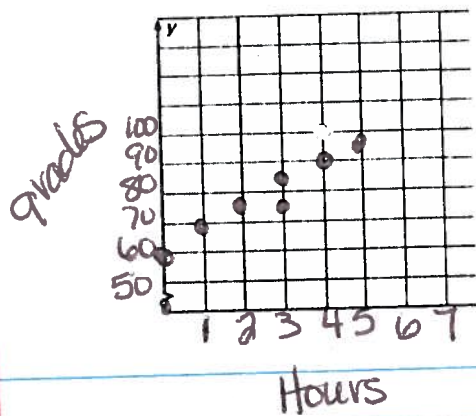


Negative Trend

Why do you think there is a negative trend?

- * Better technology
 - * Better / New meds
 - * More research, etc.
- all over time

| Study Hours | 3 | 2 | 5 | 1 | 0 | 4 | 3 |
|-------------|----|----|----|----|----|----|----|
| Grade | 84 | 77 | 92 | 70 | 60 | 90 | 75 |



Positive
what relation do you notice?

The more you study, the higher your grade.

What would you predict for 7 hours of studying?

≈ 99-100%

Is there a limit to the increase?

Yes, may not be able to go over 100%