

Solving Two-Step Equations w/ models

key

 = x

 = 1

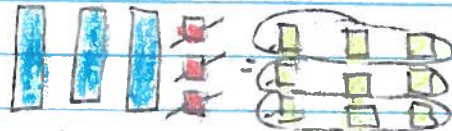
 = -1

① $3x - 3 = 6$

$+3 \quad +3$

$\frac{3x = 9}{3 \quad 3}$

$x = 3$



$+3$
into 3 groups
 $x = 3$

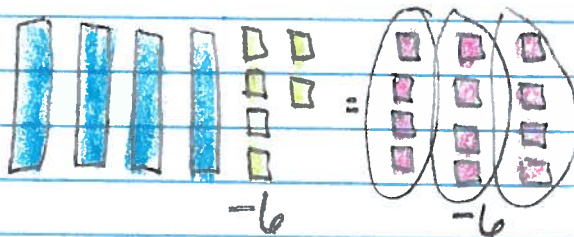
Rules = + or - first
= multiply or divide second

② $4x + 4 = -6$

$-4 = -4$

$\frac{4x = -12}{4 \quad 4}$

$x = -3$



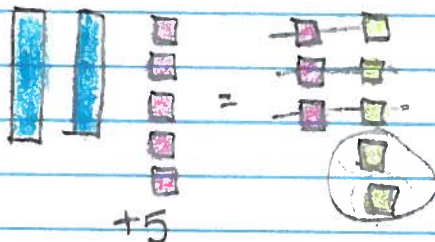
$x = -3$

③ $2x - 5 = -3$

$+5 \quad +5$

$\frac{2x = 2}{2 \quad 2}$

$x = 1$



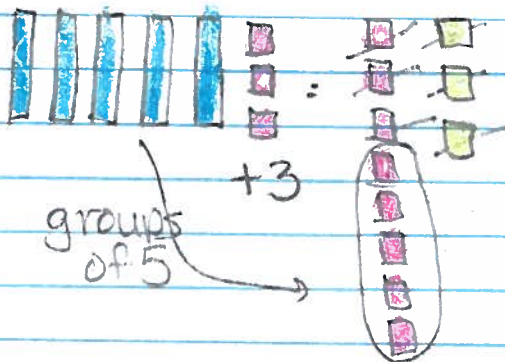
$= +1$

④ $5x - 3 = -8$

$+3 \quad +3$

$\frac{5x = -5}{5 \quad 5}$

$x = -1$



$x = -1$