

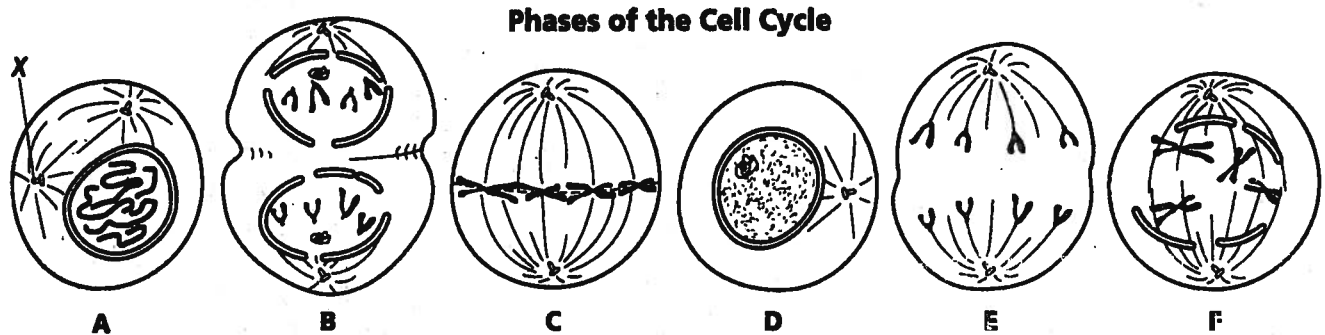
Name: \_\_\_\_\_

Date: \_\_\_\_\_

Period: \_\_\_\_\_

## Mitosis Worksheet

The diagram below shows six cells in various phases of the cell cycle. Note the cells are not arranged in the order in which mitosis occurs and one of the phases of mitosis occurs twice. Use the diagram to answer questions 1-7.



- 1) Cells A and F show an early and a late stage of the same phase of mitosis. What phase is it?
- 2) Which cell is in metaphase?
- 3) Which cell is in the first phase of mitosis?
- 4) In cell A, what structure is labeled X?
- 5) Which cell is in the "in between" phase of mitosis?
- 6) Place the diagrams in order from first to last.
- 7) Are the cells depicted plant or animal cells? Explain your answer.
- 8) What is the longest phase of the cell cycle?
- 9) Why is mitosis important?