

Now It's Your Turn!



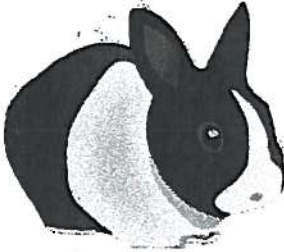
Gorilla



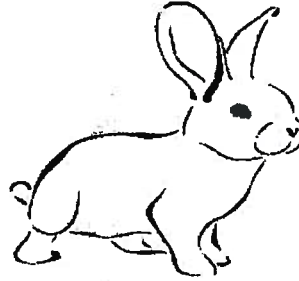
Chimp

Which monkey is better suited for swinging on trees?

Why?



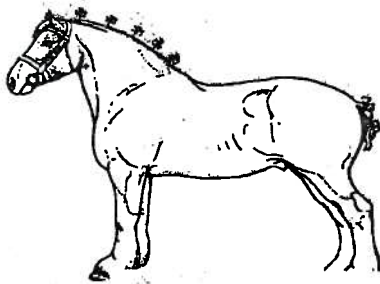
Dutch Rabbit



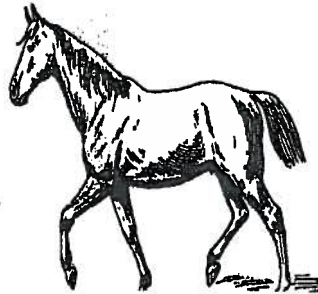
White Rabbit

Which rabbit is better suited for life in the arctic?

Why?



Clydesdale Horse



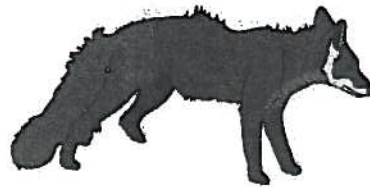
Pony

Which horse is better suited to pull massive objects?

Why?



White Fox



Brown Fox

Which fox is better suited for life in a forest?

Why?

Think About It!

In each circumstance, the animals that you see are from the same species. However there can be differences *within* the species that allow individuals to perform different jobs or live in different climates. How do these occur?