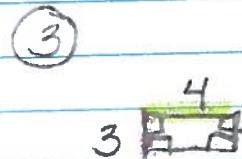
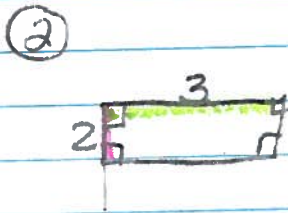
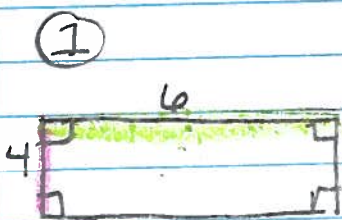


Are They Similar? Trees

Similar Figures

- * corresponding angles are congruent
- * corresponding sides are proportional



Are They Similar?

compare only two at a time = set up as a proportion!

$$1+2 \quad \frac{L}{W} \quad \frac{6}{4} = \frac{3}{2}$$

$$\text{or} \parallel \quad \frac{1}{2} \frac{6}{3} = \frac{4}{2} \frac{12}{8}$$

proportional

↓
✓ similar

2+3

$$\frac{L}{W} \quad \frac{9}{2} = \frac{4}{3}$$

or

$$\frac{1}{2} \frac{9}{3} = \frac{4}{3} \frac{8}{3}$$

not proportional

↓
not similar

1 and 3

$$\frac{L}{W} \quad \frac{6}{4} = \frac{4}{3}$$

or

$$\frac{1}{3} \frac{6}{4} = \frac{4}{3} \frac{16}{3}$$

not proportional

↓
not similar