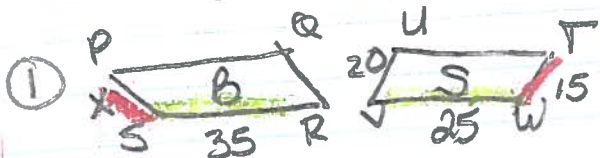


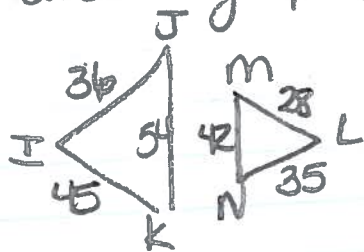
Try It's



Solve for X

$$\frac{BS}{SR} = \frac{ST}{TW}$$
$$\frac{x}{35} = \frac{15}{25}$$
$$25x = 525$$
$$x = 21$$

② Are they proportional?



Similarity statement  
 $\triangle IJK \sim \triangle LMN$

Proportionality statements

$$\frac{IJ}{LM} = \frac{JK}{MN} = \frac{IK}{LN}$$

$$\frac{36}{28} = \frac{54}{42} = \frac{45}{35}$$

$$= \frac{9}{7} = \frac{9}{7} = \frac{9}{7}$$

yes ✓